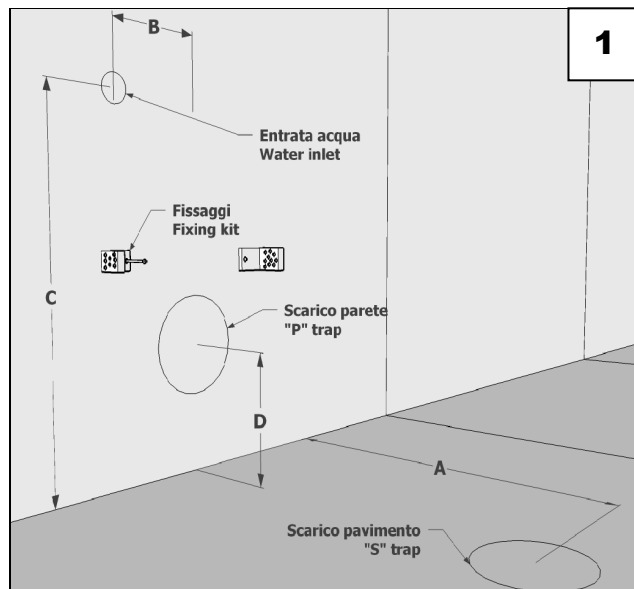


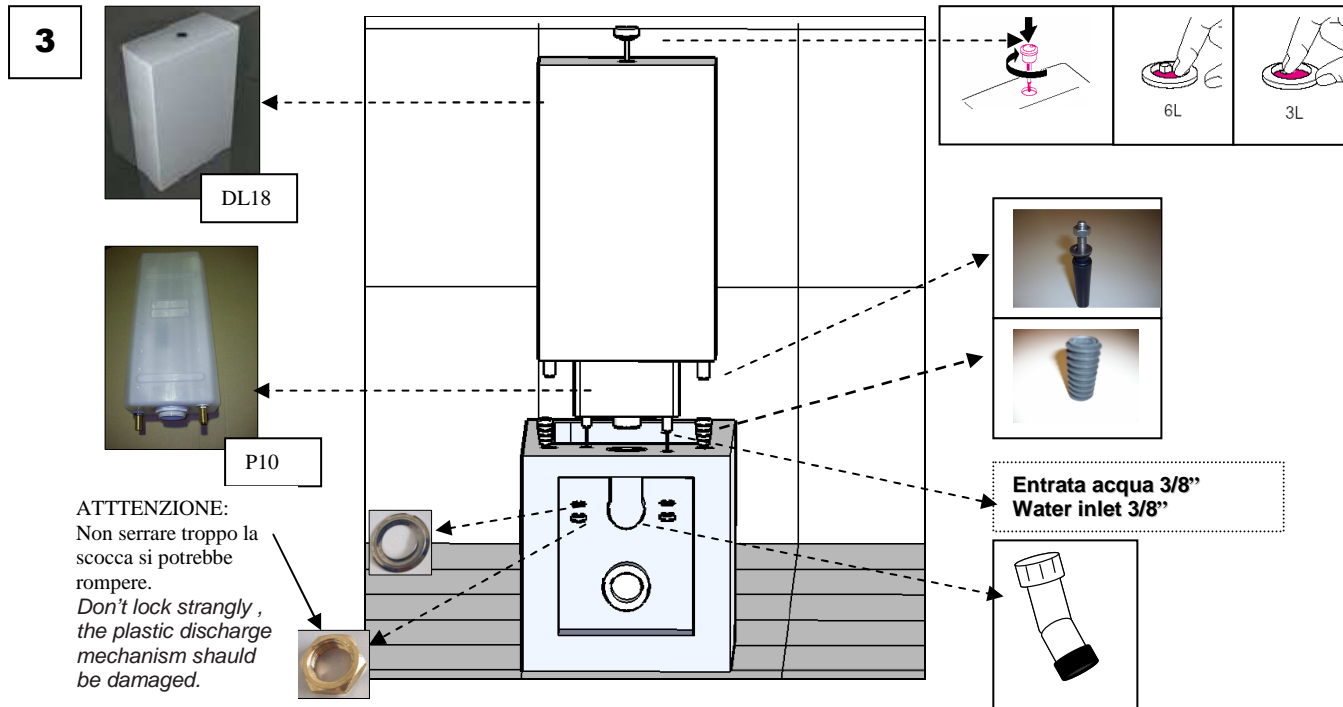
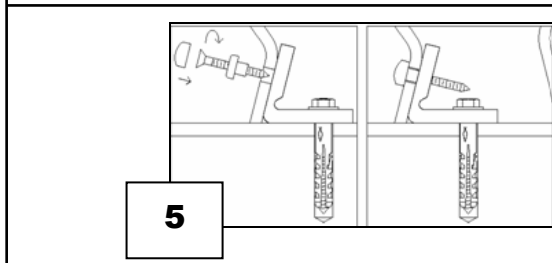
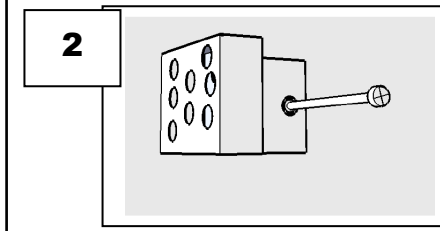
SCHEMA INSTALLAZIONE VASO MONOBLOCCO (HI12), CASSETTA (DL18) E SISTEMA DISCARICO (P10)
MOUNTING INSTRUCTIONS FOR WC CLOSE – COUPLED (HI12), CERAMIC CISTERN (DL18) AND DISCHARGE MECHANISM (P10)



1 Predisporre gli scarichi e allacci idraulici secondo le quote riportate in tabella.
 Prepare the draining and hydraulic connections according to the dimensions of the technical scheme.

Codice/ Code	A	B	C	D
HI12	240	90	260	180

- 2** Bloccare i due fissaggi a parete come raffigurato nello schema 2.
 Block the two fixings on the wall according to the scheme 2.
- 3** Installare il meccanismo di scarico e la cassetta in ceramica come raffigurato nello schema 3.
 Install the discharge mechanism and cistern according to the scheme 3.
- 4** Innestare scarichi e allacci idraulici.
 Connect the draining and hydraulic connections.
- 5** Bloccare il vaso con le apposite viti come raffigurato nello schema 5.
 Block the wc with the appropriate fixing kit according to the scheme 5.



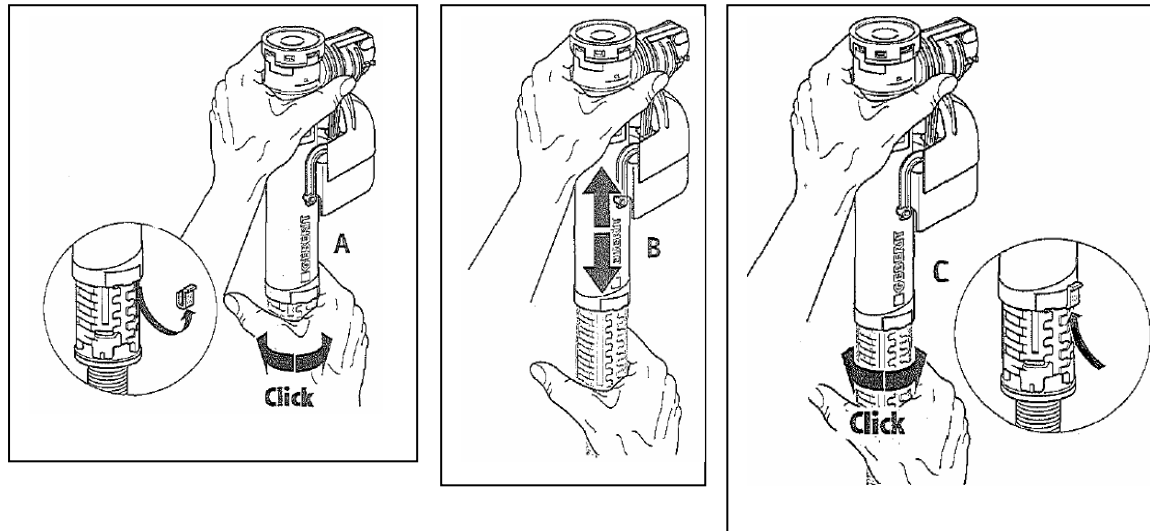
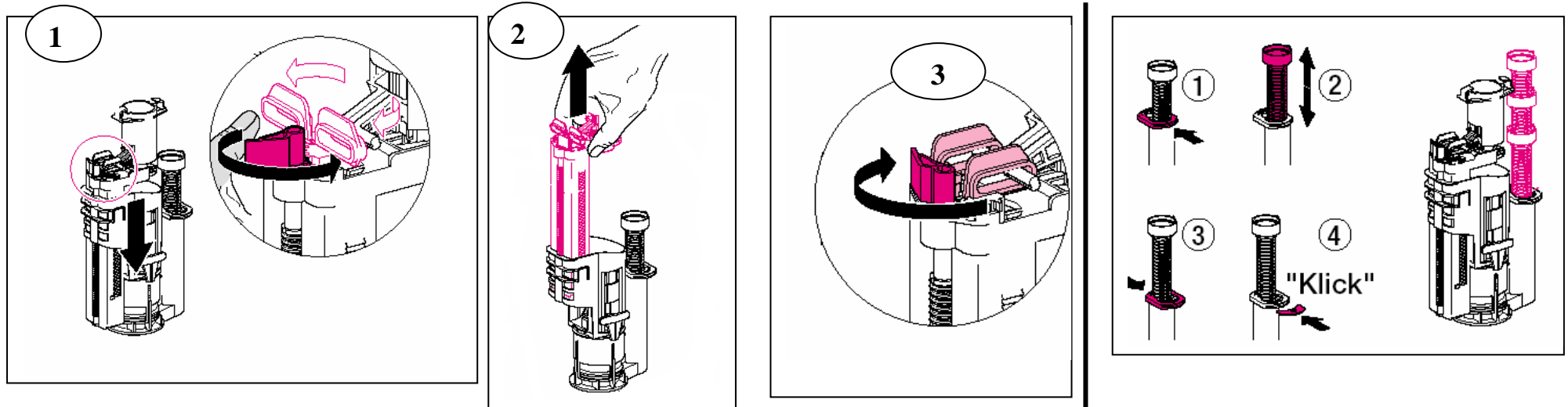
ATTENZIONE:
 Non serrare troppo la scocca si potrebbe rompere.
 Don't lock strangly, the plastic discharge mechanism should be damaged.

PROGRAMMA / PROGRAM			
Serie Line	Vaso Monoblocco Close-coupled	Cassetta Cistern	Meccanismo di scarico Discharge mechanism
Hi Line	HI12	DL18	P10

European standards	
CODICE / CODE	Prodotto conforme / Product comply
HI12	CE En 997

Hidra Ceramica Srl - via Falerina, 31/E
 01033 Civita Castellana (VT) - Italy - tel. +390761518181
 fax 390761517133
www.hidra.it - e-mail: info@hidra.it

REGOLAZIONE MECCANISMO / ADJUSTING THE MECHANISM



Il meccanismo è già tarato a 6 litri
Discharge mechanism is regulated to 6 lt



ARTICLE	A	B
HI LINE HI12 + DL18	120 mm	110 mm

